

COOLEGE™

# COOLEGE LUMINOUS CEILINGS FABRILUM SCENES: SPECIFICATIONS

PROJECT		REFERENCE TYPE	
SPECIFIED BY		QUANTITY	
DATE		NOTE	Luminous Ceilings

## DESCRIPTION

FABRILum Scenes are large area acoustic LED luminaires that can act as a single skylight or create a full luminous scene that looks and feels like the outdoors.

Available with three (3) standard scenes and four (4) mounting options, there is a “Scene” for every application.



## SIZES

Configuration (nominal W x L)
<b>1 x 1</b> (4' x 4'/1.2m x 1.2m)
<b>1 x 2</b> (4' x 8'/1.2m x 2.4m)
<b>1 x 3</b> (4' x 12'/1.2m x 3.6m)
<b>2 x 2</b> (8' x 8'/2.4m x 2.4m)
<b>2 x 3</b> (8' x 12'/2.4m x 3.6m)

## GENERAL

Mounting Options	Suspended, Surface Mount, Recessed (1x1 only), Grid (T-Bar)
Location	Indoor, dry location only
Operating Temperature	0 – 40°C (32 - 104°F)
Storage Temperature	-40 – +85°C (-40 - 185°F)
Relative Humidity	90% max (non-condensing)
Input Voltage	Nom. 120 – 277 VAC
Diffuser Material	Woven Polyester Fabric (coated)
Frame Material	Aluminum
Fire Rating	ASTM E84 Class A/EN:3501-1 Class B
Weight (single luminaire)	14 kg (31 lb)



**RoHS**

Cooledge Lighting Inc.  
110-13551 Commerce Parkway  
Richmond, BC V6V 2L1 Canada

O +1 604 273 2665  
F +1 604 273 2660  
T +1 844 455 4448  
W cooledgelighting.com

Cooledge Lighting reserves the right to change materials or modify the design of its product without notification as part of the company's continuing product improvement program.

## PHOTOMETRICS

Light Output	Scene		
Single luminaire	Trees	Sky	Shadows
Luminous Flux Range (lm)	2000 - 3900	1800 - 5000	3300 - 6300
Avg. Luminance (cd/m <sup>2</sup> )	60 - 125	55 - 160	100 - 200
Max. Luminance (cd/m <sup>2</sup> )	220 - 250	220 - 265	250 - 275

**Luminous Flux** varies depending on the amount and intensity of color on a particular luminaire. The values shown indicate the range from the least flux luminaire to the highest flux luminaire of the 6 types available for each scene.

**Average Luminance** is the value per luminaire type as above and **Maximum Luminance** is the peak value that may be seen on an individual luminaire within the set of 6.

## ACOUSTIC PERFORMANCE

Mounting Type	Noise Reduction Coefficient	Sound Absorption Average	Weighted Sound Absorption Coefficient (ISO EN11654)
	NRC	SAA	$\alpha_w$
Suspended (single)	1.00	0.98	1.00
Suspended (group)	0.95	0.95	0.95
Surface Mount	0.60	0.62	0.45 (M)
Recessed	0.75	0.74	0.45 (LM)
Grid	0.75	0.74	0.45 (LM)

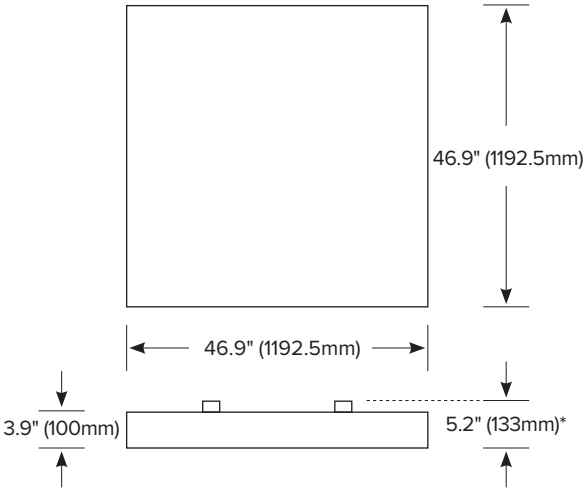
A full acoustic report is available at <https://www.cooledgelighting.com/acoustic-lighting#testreports>

## POWER

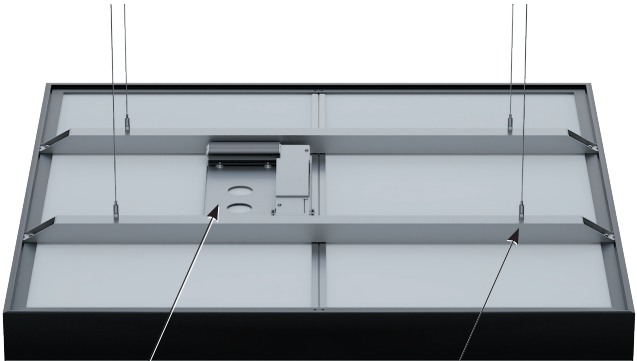
Configuration (nominal W x L)	Input Power (W)
<b>1 x 1</b> (4' x 4'/1.2m x 1.2m)	132
<b>1 x 2</b> (4' x 8'/1.2m x 2.4m)	264
<b>1 x 3</b> (4' x 8'/1.2m x 3.6m)	396
<b>2 x 2</b> (8' x 8'/2.4m x 2.4m)	528
<b>2 x 3</b> (8' x 12'/2.4m x 3.6m)	792

MOUNTING DETAILS

Dimensions are for a single luminaire = "1x1" configuration



\*Surface Mount will have an opening of 1.3" (33mm) between the frame and the ceiling

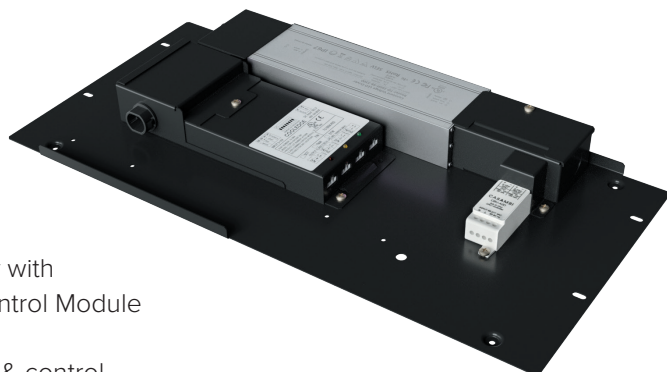


Power & Control tray  
(may be removed and mounted to ceiling)

Suspended Mounting  
option shown

Mounting Type	Mounting Kit Required	Notes
Surface Mount	No mounting kit necessary	Mounts directly to the ceiling material through the mounting rails
Suspended	Mounting Kit included	Hardware for cable attachment to luminaire
Recessed	Mounting Kit included	Provides a trim for mounting within drywall or plaster ceiling (1x1 only)
Grid (T-Bar) - Metric	No mounting kit necessary	Lay-in for use with 24mm T-Bar (RS size only)
Grid (T-Bar) - Imperial	LACC-GR-K	Adapter plate enables lay-in for use with 15/16" T-Bar (RS size only)

POWER AND CONTROL



Power Supply with  
Cooledge Control Module

Actual power & control configuration is determined by the luminaire model.

Power & Control Mounting Plate

**Mounting Plate Dimensions:** 400mm x 190mm (15.75" x 7.5")

FABRILum offers two choices for locating the power and control components:

- **Integrated (Suspended & Recessed):** the mounting plate containing the power supply and control module may be secured to the top of the luminaire. AC electrical connections are made directly to the power supplies at the luminaire
- **Remote Mounted (All):** the mounting plate can be located remotely in a location that may be more suitable for AC electrical connection or for maintenance access (see [www.cooledgelighting.com](http://www.cooledgelighting.com) or contact Cooledge for remote distance wiring requirements)

Power Supply Performance	
Input Voltage	Nom. 120-277VAC
Input Frequency	Nom. 50-60 Hz
Start-up Time	1.25 sec
Max. Inrush Current	60 A
Rated Lifetime	200,000 hr

Control Module Performance	
Minimum Dim Level	5%
Operating Frequency	3000Hz (compliant with IEEE 1789-2015 for flicker free)
Control Protocols	0/1-10V (DALI available via converter modules)

# COOLEEDGE LUMINOUS CEILINGS FABRILUM SCENES: SPECIFICATIONS

## Trees



FBx-SCN-TR-23-010-\_\_\_  
Light Output: 17,460 lm



FBx-SCN-TR-22-010-\_\_\_  
Light Output: 11,830 lm



FBx-SCN-TR-12-010-\_\_\_  
Light Output: 5,980 lm

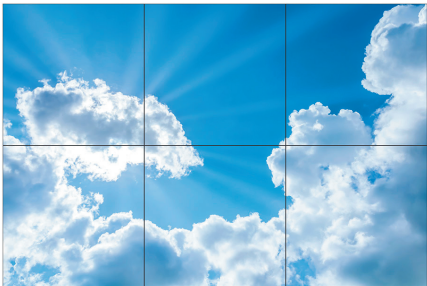


FBx-SCN-TR-11-010-\_\_\_  
Light Output: 2,510 lm



FBx-SCN-TR-13-010-\_\_\_  
Light Output: 8,600 lm

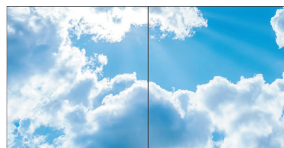
## Sky



FBx-SCN-SK-23-010-\_\_\_  
Light Output: 20,430 lm



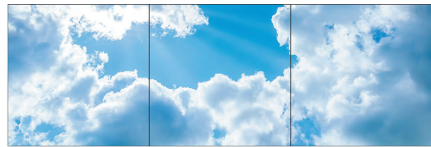
FBx-SCN-SK-22-010-\_\_\_  
Light Output: 13,870 lm



FBx-SCN-SK-12-010-\_\_\_  
Light Output: 8,930 lm



FBx-SCN-SK-11-010-\_\_\_  
Light Output: 3,140 lm



FBx-SCN-SK-13-010-\_\_\_  
Light Output: 12,950 lm

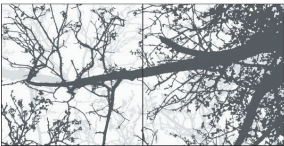
## Shadows



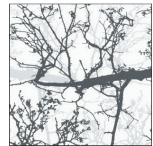
FBx-SCN-SH-23-010-\_\_\_  
Light Output: 27,740 lm



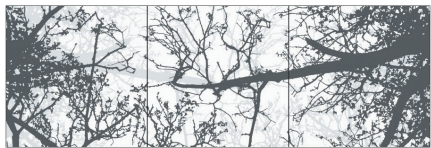
FBx-SCN-SH-22-010-\_\_\_  
Light Output: 19,970 lm



FBx-SCN-SH-12-010-\_\_\_  
Light Output: 8,750 lm



FBx-SCN-SH-11-010-\_\_\_  
Light Output: 5,480 lm



FBx-SCN-SH-13-010-\_\_\_  
Light Output: 12,670 lm

## HOW TO ORDER

FBx - SCN - 010  
1 - 2 - 3 - 4 - 5 - 6

### 1 MOUNTING

FBS = Suspended  
FBM = Surface Mt  
FBR = Recessed  
FBG = Grid (T-Bar)

### 2 MODEL

SCN = Scenes

### 3 SCENE

TR = Trees  
SK = Sky  
SH = Shadows

### 4 CONFIGURATION

11 = 1x1  
12 = 1x2  
13 = 1x3  
22 = 2x2  
23 = 2x3

### 5 CONTROL

010 = 0-10V

### 6 CERTIFICATION

CE = CE Compliant  
UL = UL Listed